

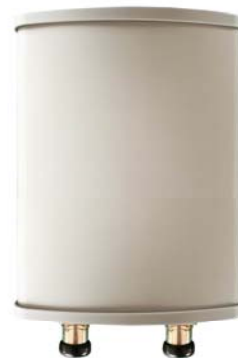
Product Specifications

Model No.

KD-07278X65-A

Description

698-2700MHz X pol 8dBi 65° Directional Antenna



Electrical Specifications

Frequency Band,MHz	698-800	800-960	1710-2170	2170-2700
Gain,dBi	7.5	8	8.5	8.5
VSWR	≤ 1.8	≤ 1.5	≤ 1.5	≤ 1.5
Beamwidth, Horizontal	68	65	60	60
Beamwidth, Vertical	68	65	60	55
Front to Back Ratio at 180°, dB	24		25	
PIM,3rd Order,2×20W,dBc	≤ -150			
Isolation Between Ports, dB	≤ -25			
Polarization	$\pm 45^\circ$			
Input Impedance,ohms	50			
Input Power,max.watts	300			

Mechanical Specifications

Color	White
Connector Type	2*7/16 Female
Radome Material	PVC ,UV resistant
Mount Type	Poles mounting with clamps, Pole Dia. between 50–90 mm
Dimensions, mm	295*280*125
Packed Dimensions, mm	370*330*160
Net Weight, kg	2.5
Shipping Weight, kg	3.8

Environmental Specifications

Operating Temperature	-35°C to +55°C
Relative Humidity	5-95%
Application	Outdoor
Max. wind velocity,m/s	60